

[Full Version 2016 Latest Updated 300-070 Dumps Free Download In Lead2pass (21-40)]

2016 November Cisco Official New Released 300-070 Dumps in Lead2pass.com! 100% Free Download! 100% Pass Guaranteed! Lead2pass presents the highest quality of 300-070 exam question which helps candidates to pass the 300-070 exams in the first attempt. Lead2pass professional tools like questions and answers are extremely reliable source of preparation. When you use Lead2pass preparation products your success in the Certification exam is guaranteed. Following questions and answers are all new published by Cisco Official Exam Center: <http://www.lead2pass.com/300-070.html>

QUESTION 21 Which discard digits instruction removes all digits prior to the North American Numbering Plan portion of the route pattern? A. PreDot B. PreAt C. Pre D. PreNANP Answer: B

QUESTION 22 Which two codecs are supported by the Cisco Unified Communications Manager software conferencing media resource? (Choose two.) A. G.723 B. G.729 C. wideband D. GSM E. G.711 Answer: CE

QUESTION 23 Which two of these describe where phone services can appear on an IP phone and who can subscribe to phone services? (Choose two.) A. end user B. administrator C. end user and administrator D. Services button E. Services and Directories buttons F. Services, Directories, and Messages buttons Answer: AD

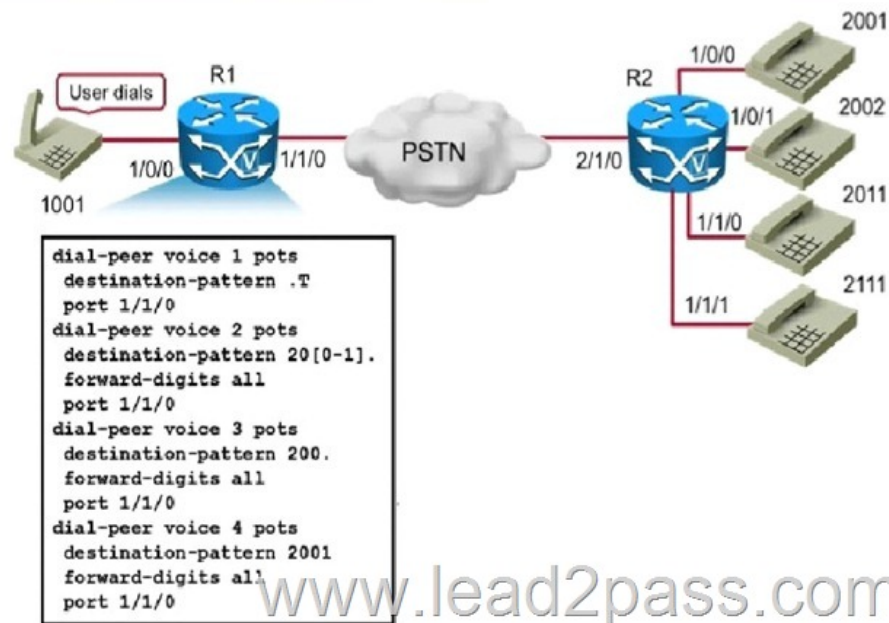
QUESTION 24 Which three Cisco Unified Communications Manager settings can be used to support IP phone services? (Choose three.) A. Device Defaults B. Enterprise Parameters C. IP Phone Service Configuration window D. Common Phone Profile E. Service Parameters F. Phone Configuration window Answer: BDF

QUESTION 25 Which groups will have access to the Meet-Me conference numbers that are set to use the <None> partition? A. Only users that have the <None> partition assigned in their calling search space will have access to the Meet-Me conference numbers. B. All users will have access to the Meet-Me conference numbers. C. The <None> partition will prevent all users from accessing the Meet-Me conference numbers. D. Any IP phones with their lines configured in the <None> partition will have access to the Meet-Me conference numbers. Answer: B

QUESTION 26 Which two of these are required in order for Cisco Unified Communications Manager to support software conferencing? (Choose two.) A. The Cisco IP Voice Media Streaming Application needs to be activated on the server running the conferencing service in the cluster. B. The service parameter for the Cisco IP Voice Media Streaming Application needs to have Run Flag set to True. C. The software conference bridge resource needs to be configured in Cisco Unified Communications Manager. D. The Cisco IP Voice Media Streaming Application needs to be activated for all servers in the cluster. E. Under the Cisco IP Voice Media Streaming Application parameters, the conference bridge needs to have Run Flag set to True. Answer: AE

QUESTION 27 What are two characteristics of a Cisco Unified Communications Manager Enterprise parameter? (Choose two.) A. It is used to configure settings for specific services. B. It is used to define end-user authentication settings. C. It sets initial values of device-defaults. D. It is used to configure settings for different services. E. It is used to define clusterwide settings. Answer: CE

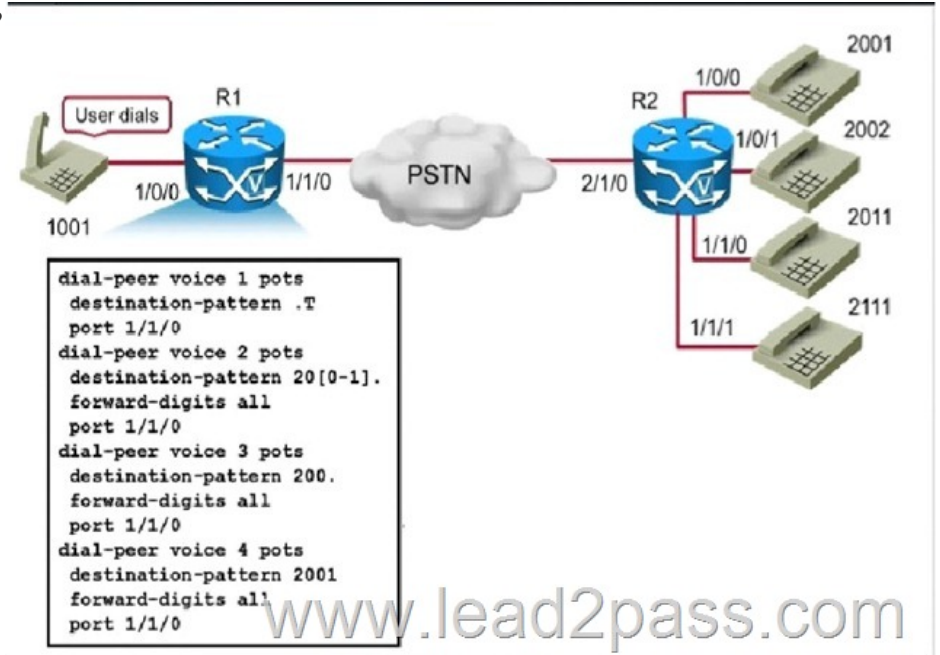
QUESTION 28 Refer to Exhibit. If the user at extension 1001 dials the user at extension 2001, which dial peer is used to route the call?



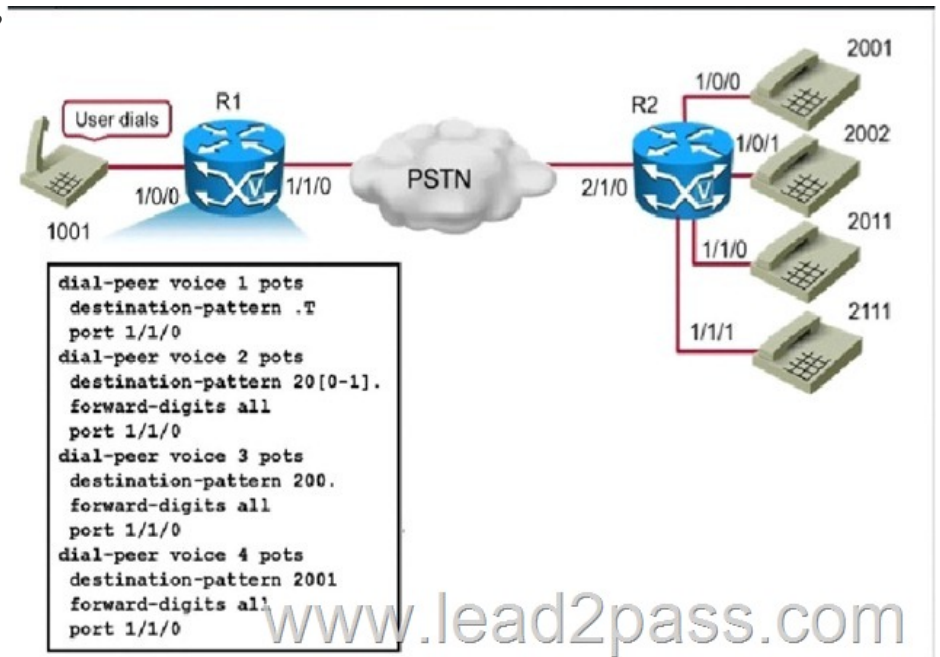
A. 3 B. 2 C. 4 D. 1 Answer: C

QUESTION 29 Refer to Exhibit, If the user at extension 1001 dials the user at extension

2111, which dial peer is used to route the call?



A. 3 B. 2 C. 4 D. 1 Answer: D QUESTION 30 Refer to Exhibit, If the user at extension 1001 dials the user at extension 2002, which dial peer is used to route the call?



A. 3 B. 2 C. 4 D. 1 Answer: A QUESTION 31 Which type of IOS Conference bridge requires all users to use the same video format in order to participate in a video conference? A. Ad Hoc Conferencing B. Homogenous Conferencing C. Heterogenous Conferencing D. Guaranteed Audio Video Conferencing E. Meet-Me Conferencing Answer: B QUESTION 32 Which two of the following DSPs can be used in heterogenous conferencing to achieve the required trans- sizing and transcoding functionality? (Choose two.) A. PVDM3-256 B. PVDM2-256 C. PVDM-192 D. PVDM3-32 E. PVDM3-192 F. PVDM2-128 Answer: AE QUESTION 33 Which of the following simplifies and enhances conference resource management? A. Cisco Telepresence Server B. Cisco Telepresence MCU C. Cisco Telepresence MSE 8000 D. Cisco IOS routers with packet voice/data module (PVDM) E. Cisco Telepresence Conductor Answer: E QUESTION 34 What is the maximum number of 1080p30 HD Conference Participants if an MSE 8000 has four MSE8710 blades clustered? A. 48 B. 180 C. 720 D. 800 Answer: A QUESTION 35 Which route pattern wildcard character is used to terminate the interdigit timeout? A. \$ B. ! C. # D. . Answer: C QUESTION 36 When a call is attempted during a particular time of day, what determines the partitions where calling devices search? A. time schedules B. calling periods C. dial schedules D. time periods Answer: A QUESTION 37 When

configuring an H.323 gateway, which configuration option can be used to set whether an incoming call is considered off the network (OffNet) or on the network (OnNet)? A. call classification B. call location C. device pool D. signaling port Answer: A

QUESTION 38 When local route groups are used and a user dials 918005551212, what component is ultimately used to route the digits to the local gateway? A. The route list applied to the route pattern B. The device pool of the calling device C. The translation pattern D. The gateway or route list associated with the +.! route pattern Answer: B

QUESTION 39 You are performing route pattern configuration. You need to ensure that internal extensions are automatically expanded to full external phone numbers for calling line information on outgoing calls. What should you use? A. calling extension expansion B. called number expansion C. external number mask of the called party D. external phone number mask of the calling party Answer: D

QUESTION 40 The CSS on a line includes the partitions 911, internal and local. The CSS on the device includes the partitions 911, internal, local and long distance. Which CSS will be used if the phone user dials a local number? A. The device CSS will be used since the device CSS is always used first on an IP phone. B. Since the dialed digits are a match to a partition in both Calling Search Spaces the call will use both matched partitions in both Calling Search Spaces in a round-robin format. C. If there is both a line and device CSS the line device will only be used. D. The line and device CSSs will be combined and the device CSS will take precedence. E. The line and device CSSs will be combined and the line CSS will take precedence. Answer: E

Lead2pass is now here to help you with your 300-070 exam certification problems. Because we are the best 300-070 exam questions training material providing vendor, all of our candidates get through 300-070 exam without any problem. 300-070 new questions on Google Drive:

<https://drive.google.com/open?id=0B3Syig5i8gpDcjk5aUUtk12Ulk> 2016 Cisco 300-070 exam dumps (All 199 Q&As) from

Lead2pass: <http://www.lead2pass.com/300-070.html> [100% Exam Pass Guaranteed]